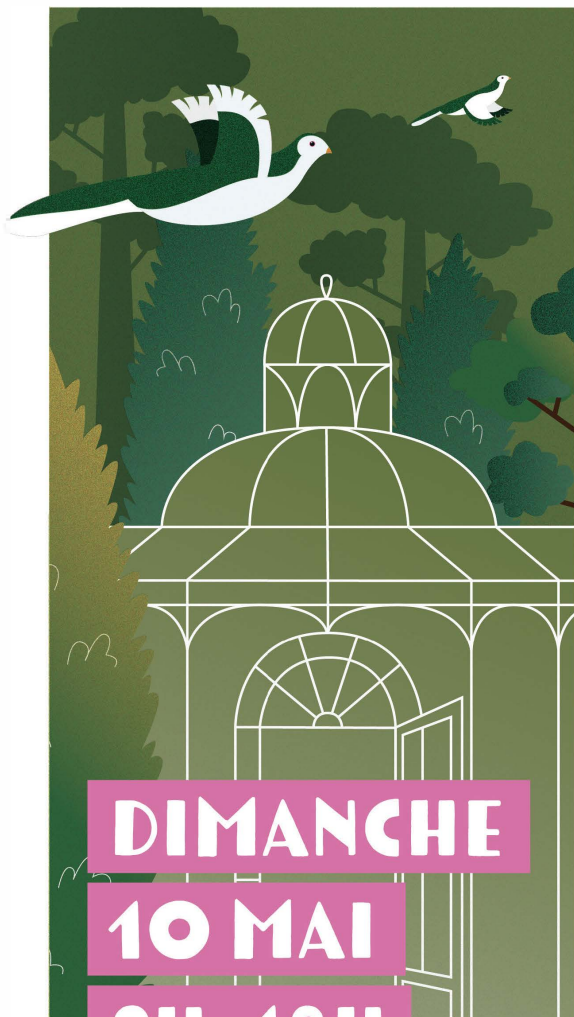


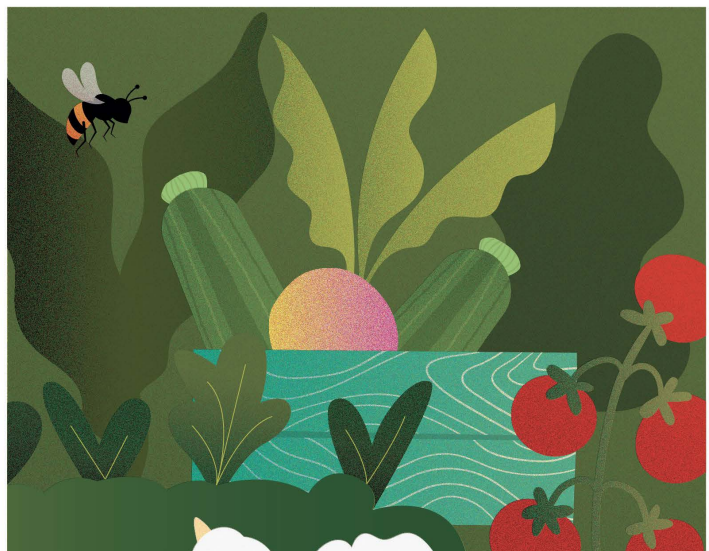
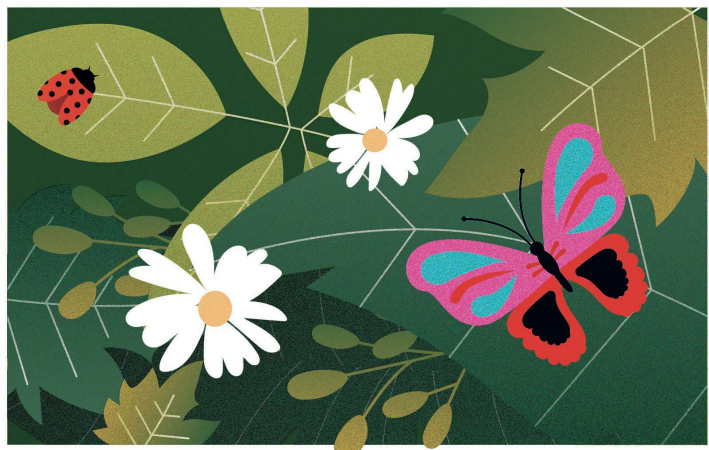
# PORTES OUVERTES DES SERRES MUNICIPALES



**DIMANCHE**

**10 MAI**

**9H-18H**



## LES SERRES S'OUVRENT, LA NATURE S'INVITE

**ANIMATIONS - EXPOSITIONS - VENTES - RESTAURATION**

156 avenue des courtilleraies - Le Mée-sur-Seine  
Parking gratuit au parc Debreuil

